

Study of the Implementation of the *ESEA* Title I, Part C Migrant Education Program

**Presentation and Discussion with the
Interstate Migrant Education Council**

October 17, 2019

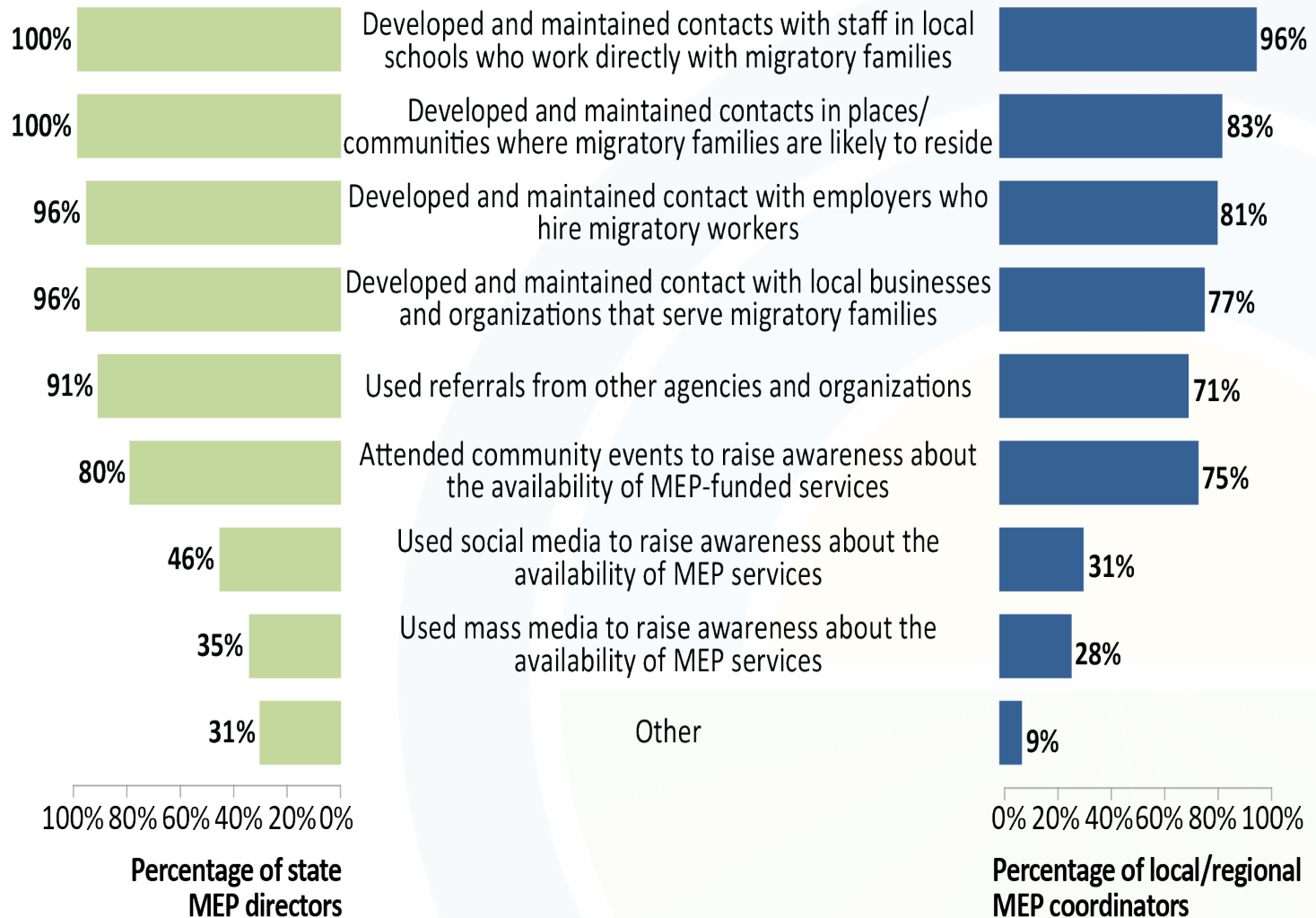
STUDY QUESTIONS

- How do state MEP grantees and local/regional subgrantees identify, recruit, and prioritize migratory children for services?
- How does the Migrant Student Information Exchange (MSIX) system facilitate the transfer of educational and health information to support enrollment, placement, and accrual of credits for migratory children?
- What services do state MEP grantees and local/regional subgrantees provide to migratory children?
- How do state MEP grantees and local/regional subgrantees collaborate with other programs and organizations to deliver services to migratory children?

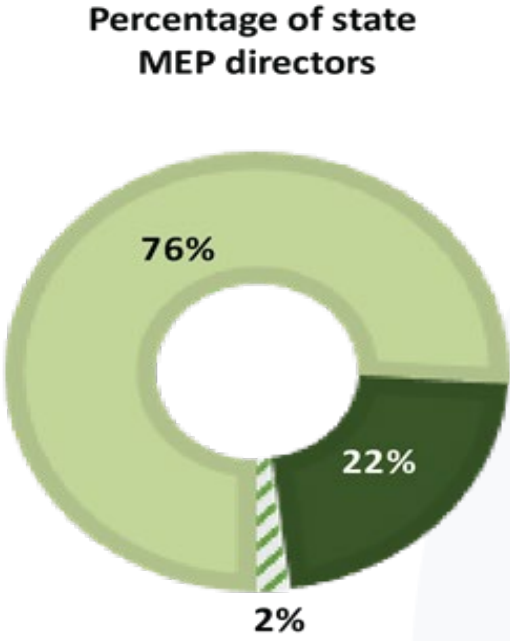
**MOST STATE MEP GRANTEES RELIED ON THEIR LOCAL/REGIONAL MEP
SUBGRANTEES AND OUTSIDE CONTRACTORS TO MANAGE THE ID&R
PROCESS**



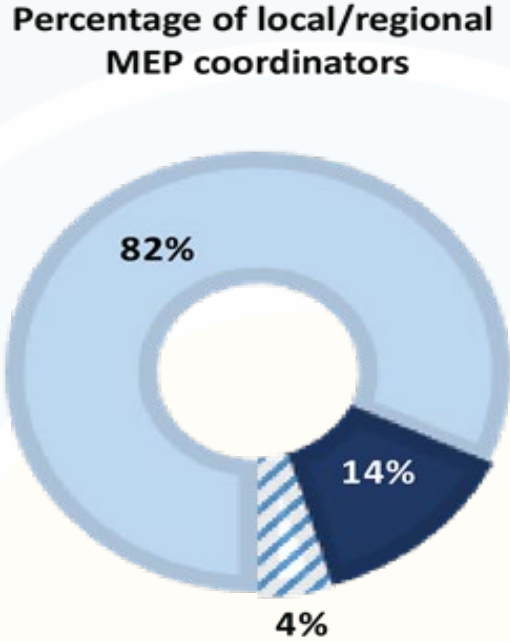
RECRUITERS MOST COMMONLY IDENTIFIED MIGRATORY CHILDREN USING THEIR CONTACTS IN THE SCHOOLS, COMMUNITIES, AND BUSINESSES THAT MIGRATORY FAMILIES FREQUENT



MOST STATE MEP DIRECTORS AND LOCAL/REGIONAL MEP COORDINATORS REPORTED THAT MSIX FACILITATED INTERSTATE STUDENT RECORDS TRANSFERS

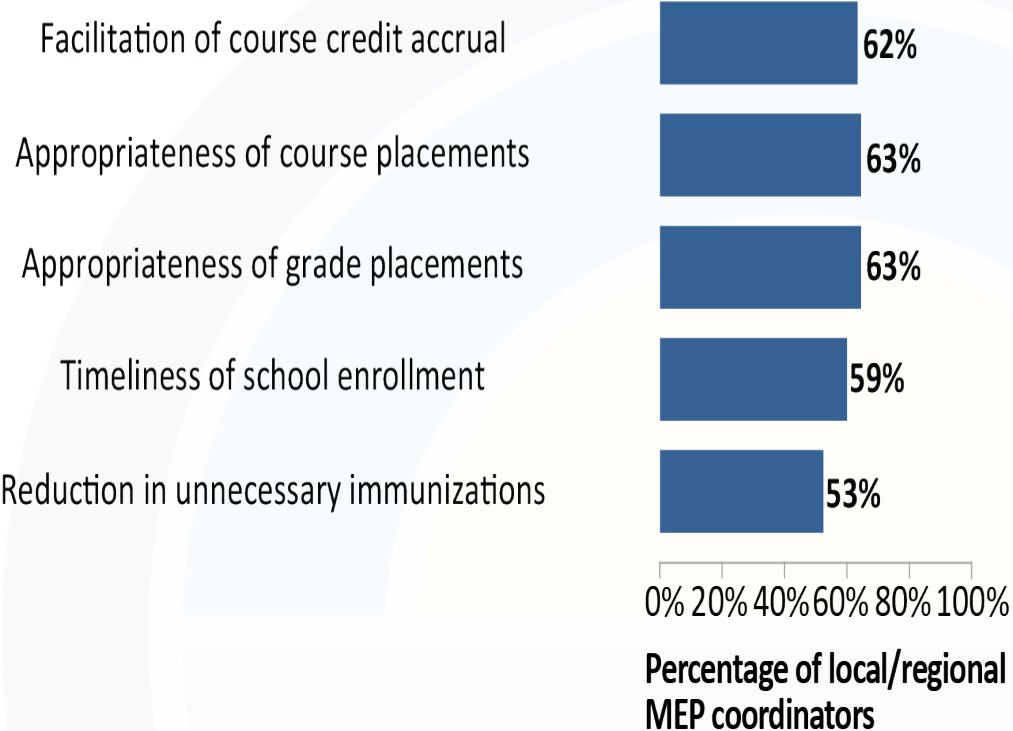
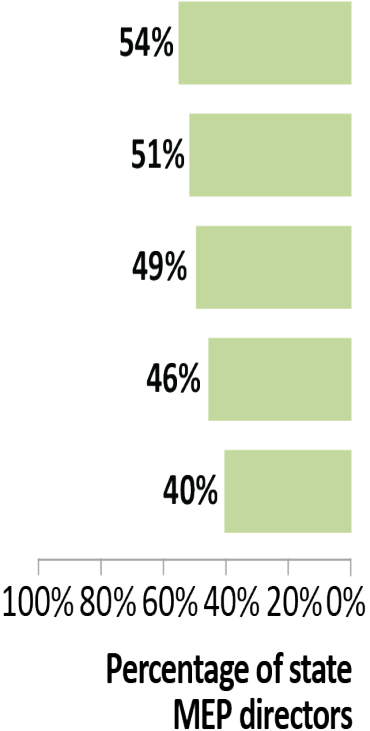


- Somewhat or significantly
- Minimally
- Not at all

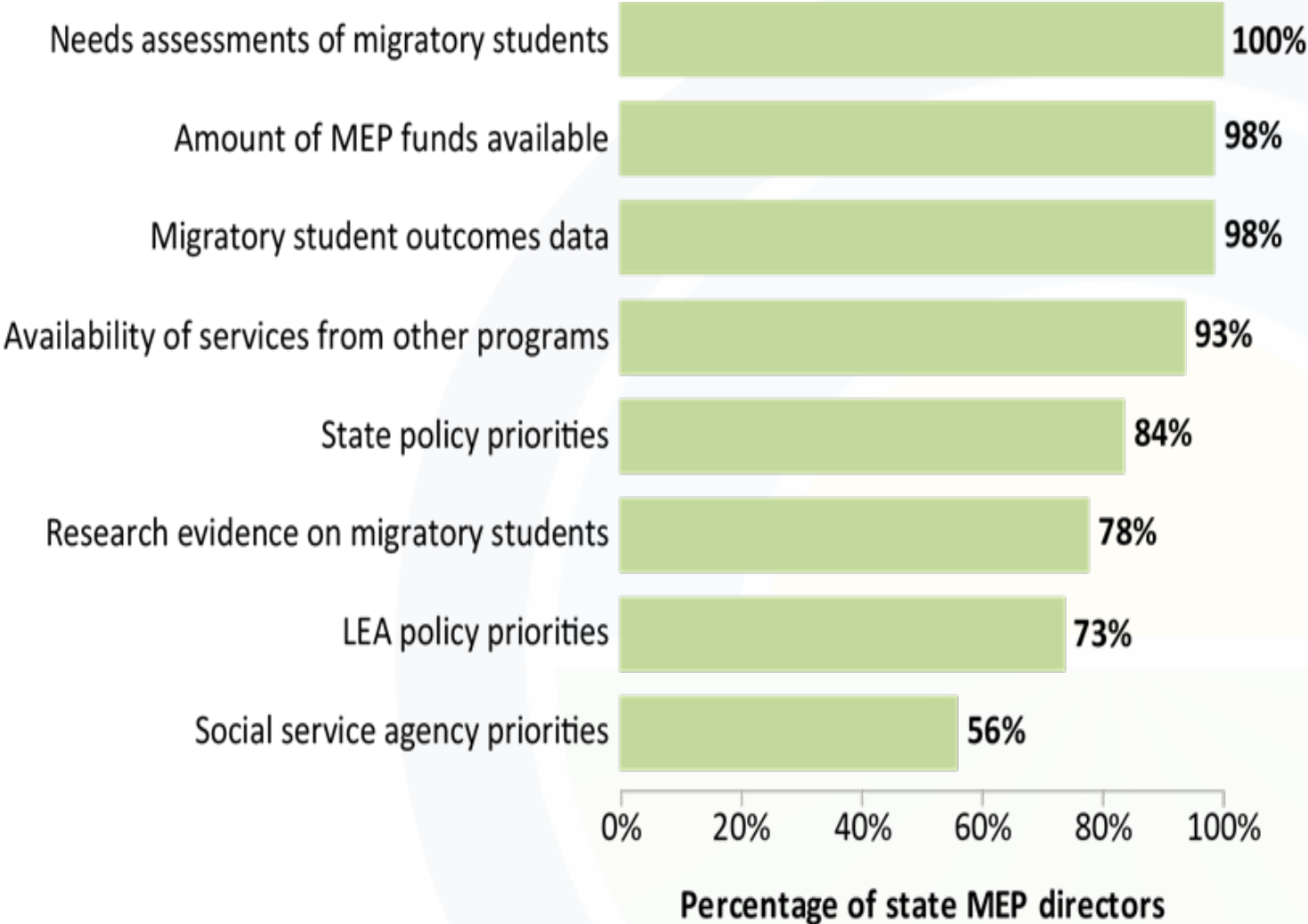


- Somewhat or significantly
- Minimally
- Not at all

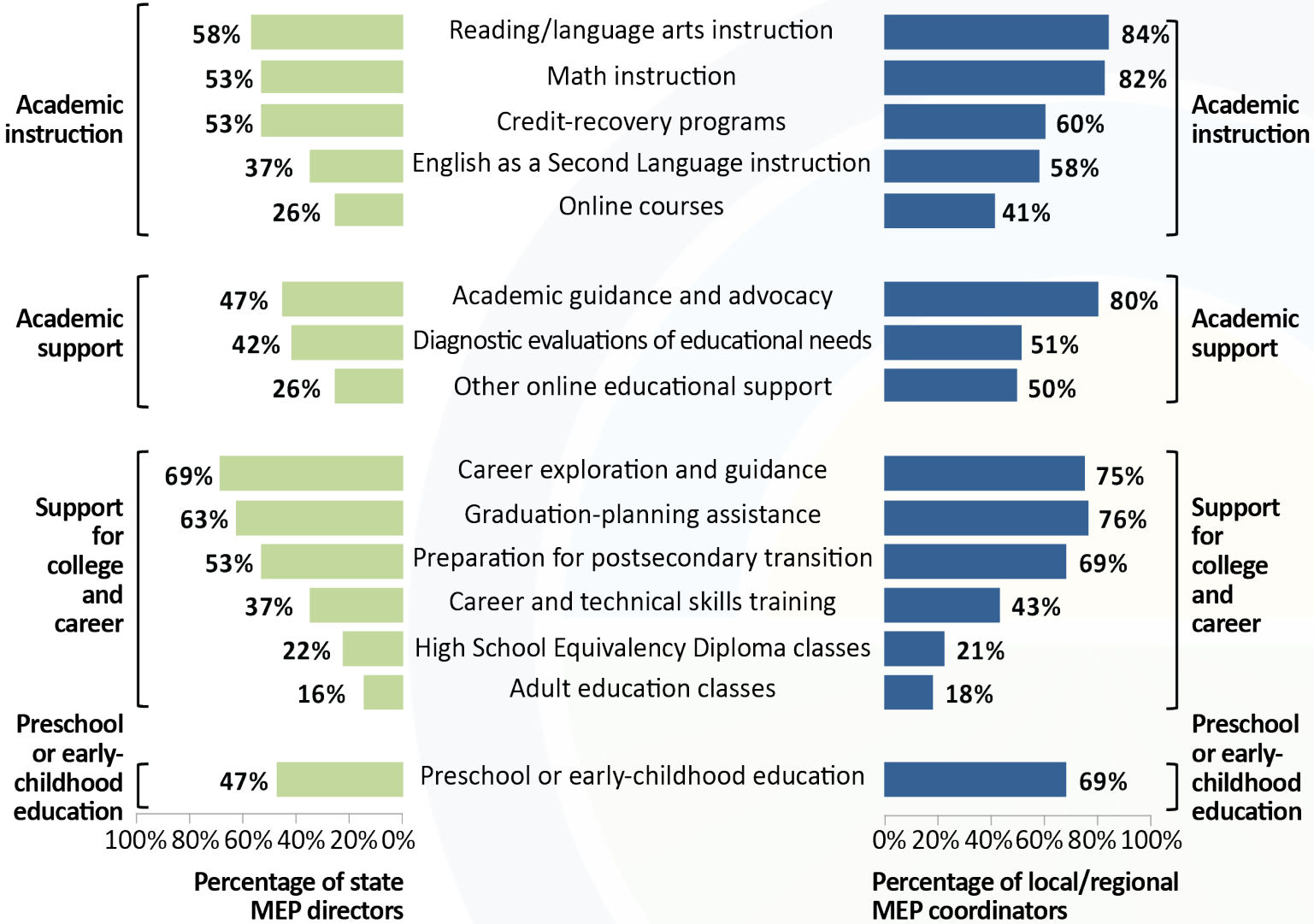
THE MAJORITY OF LOCAL/REGIONAL MEP COORDINATORS AND ABOUT HALF THE STATE DIRECTORS REPORTED THAT MSIX HAD MODERATELY OR SUBSTANTIALLY IMPROVED OTHER PRACTICES INTENDED TO MITIGATE THE EFFECTS OF EDUCATIONAL DISRUPTIONS FOR MIGRATORY CHILDREN



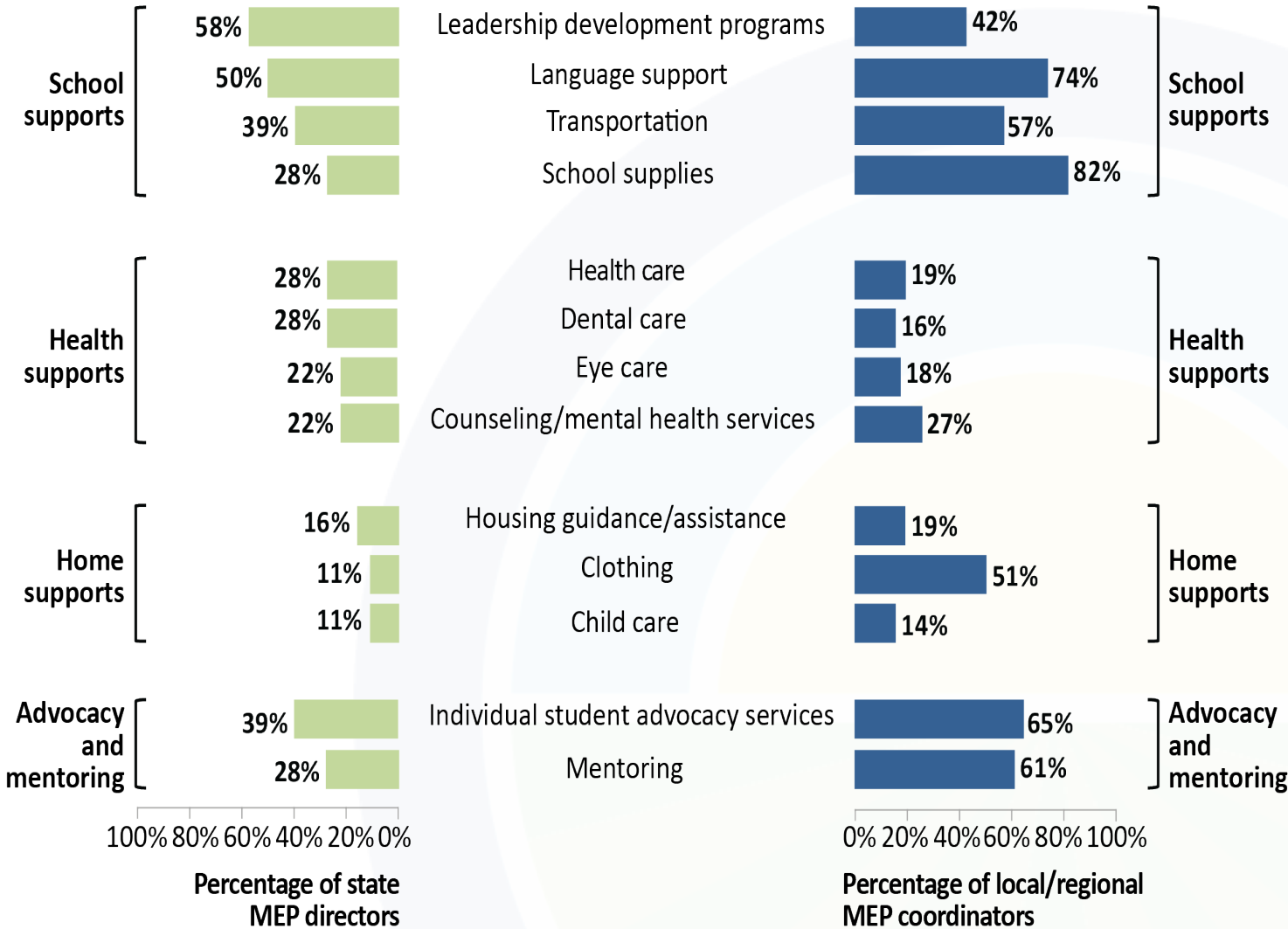
STATE MEP DIRECTORS CONSIDERED A VARIETY OF FACTORS IN DETERMINING SPECIFIC SERVICES TO PROVIDE OR FUND FOR MIGRATORY CHILDREN



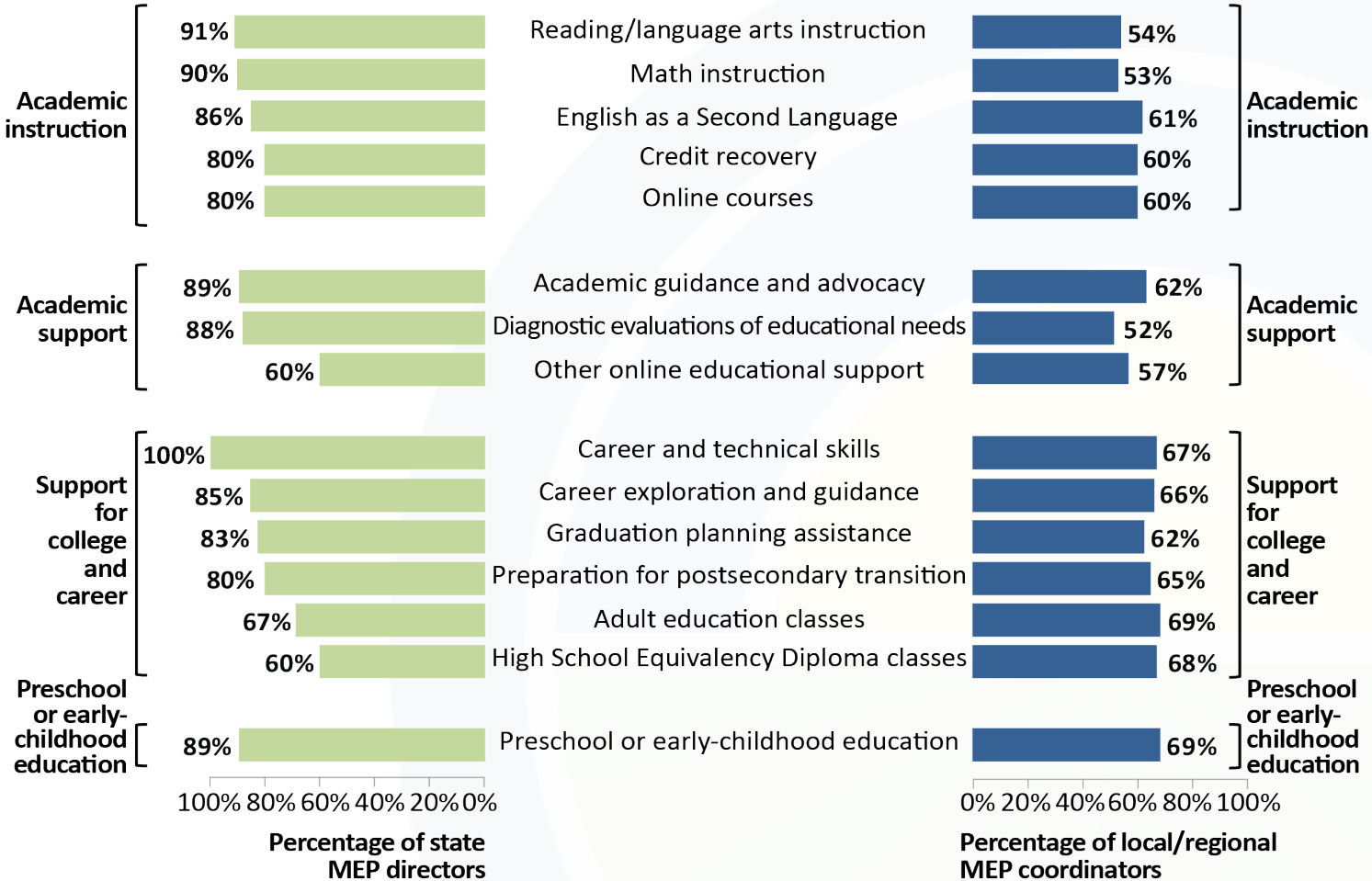
STATE MEP GRANTEES AND LOCAL/REGIONAL SUBGRANTEES PROVIDED A VARIETY OF INSTRUCTIONAL SERVICES



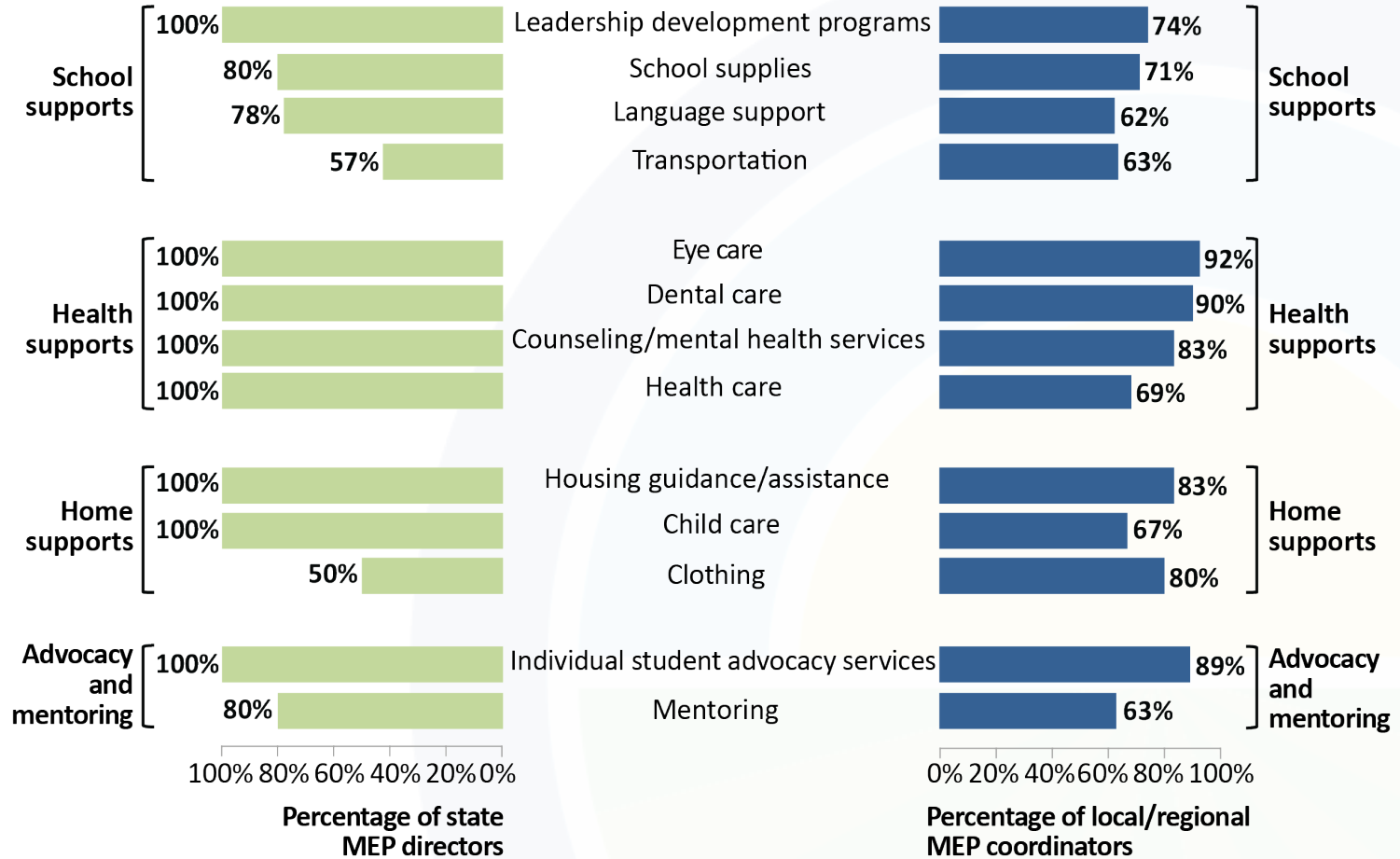
SCHOOL SUPPLIES, LANGUAGE SUPPORT AND INDIVIDUAL ADVOCACY SERVICES WERE THE MOST COMMONLY OFFERED SUPPORT SERVICE OFFERED BY LOCAL/REGIONAL GRANTEES



THE MAJORITY OF STATE AND LOCAL MEP GRANTEES AND SUBGRANTEES COLLABORATED WITH OTHER AGENCIES AND ORGANIZATIONS TO PROVIDE INSTRUCTIONAL SERVICES AND OTHER ACADEMIC SUPPORTS TO MIGRATORY CHILDREN



THE MAJORITY OF STATE AND LOCAL MEP GRANTEES AND SUBGRANTEES COLLABORATED WITH OTHER AGENCIES AND ORGANIZATIONS TO PROVIDE SUPPORT SERVICES TO MIGRATORY CHILDREN



JOANNE BOGART

OFFICE OF PLANNING, EVALUATION AND POLICY DEVELOPMENT

[HTTPS://WWW2.ED.GOV/ABOUT/OFFICES/LIST/OEPD/PPSS/REPORTS.HTML#MIGRANT](https://www2.ed.gov/about/offices/list/oepd/ppss/reports.html#migrant)

JOANNE.BOGART@ED.GOV

202-205-7855